

## Description

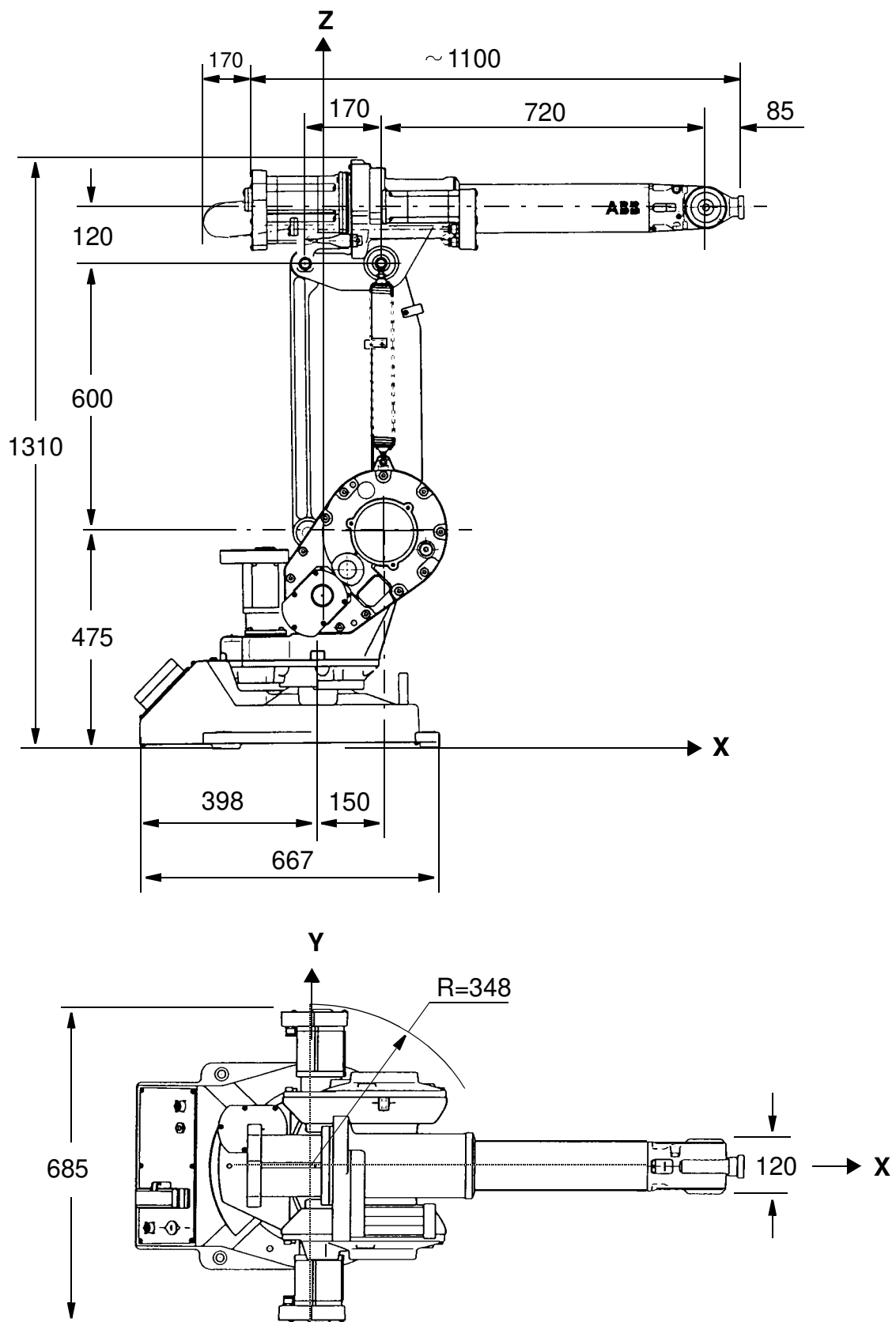


Figure 2 View of the manipulator (floor mounted version) from the side and above (dimensions in mm).

## 1.5 Robot Motion

Type of motion		Range of movement	
Axis 1	Rotation motion	+170°	-170°
Axis 2	Arm motion	+70°	-70°
Axis 3	Arm motion	+70°	-65°
Axis 4	Wrist motion	+150°	-150°
Axis 5	Bend motion	+115°	-115°
Axis 6	Turn motion	+300°	-300°

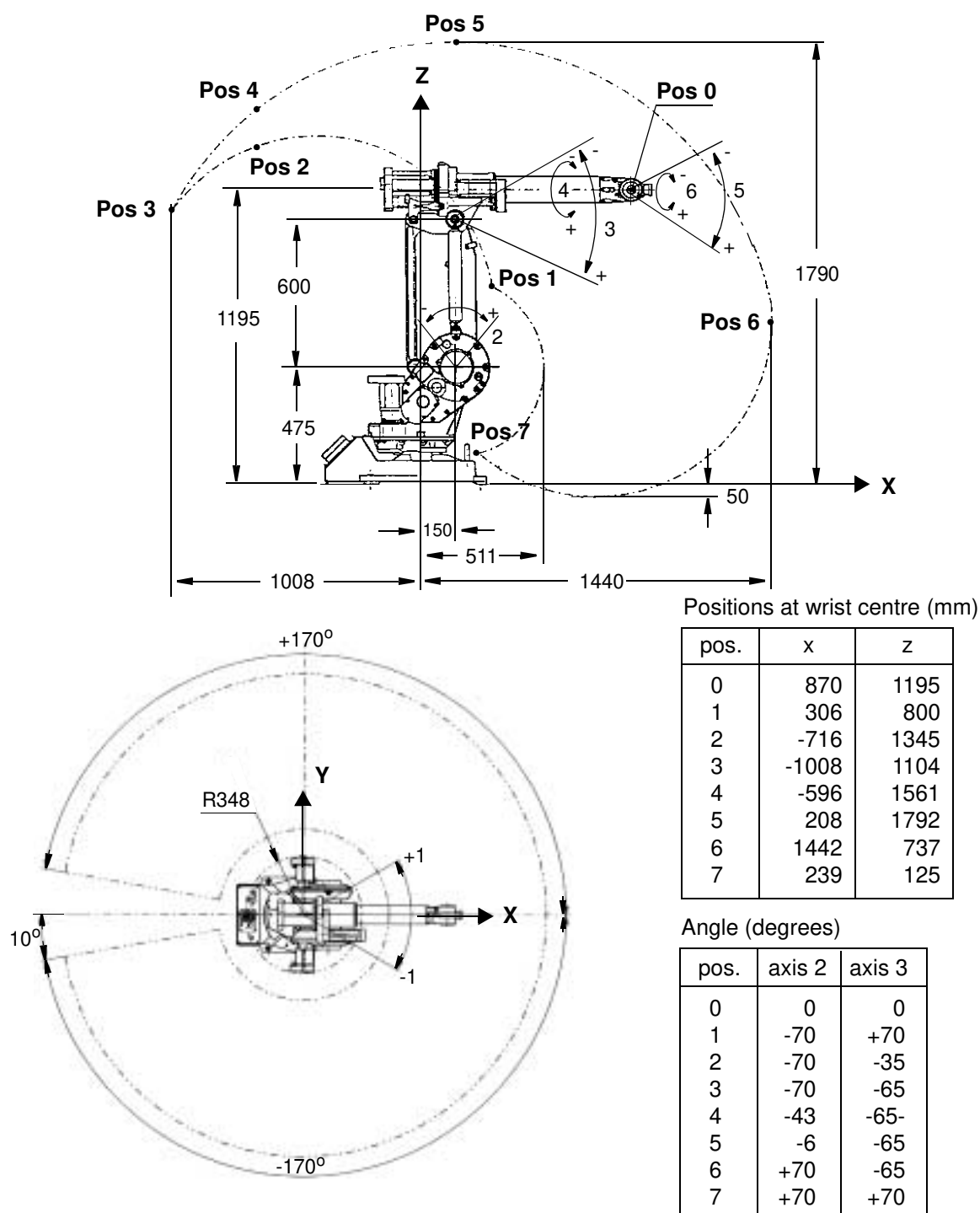


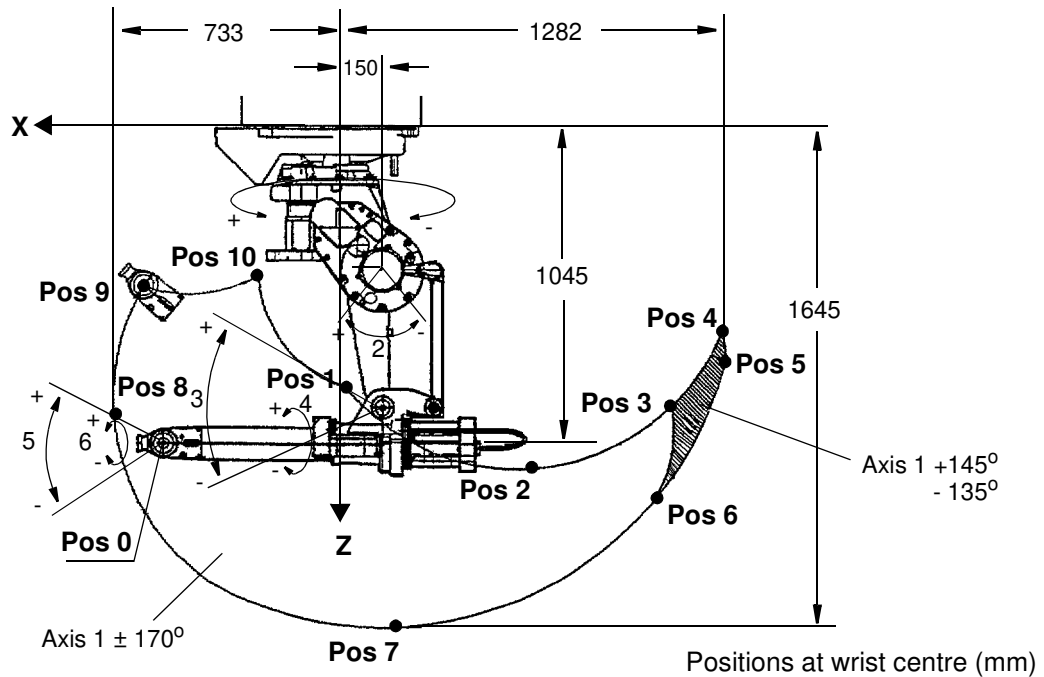
Figure 9 The extreme positions of the robot arm.

## Description

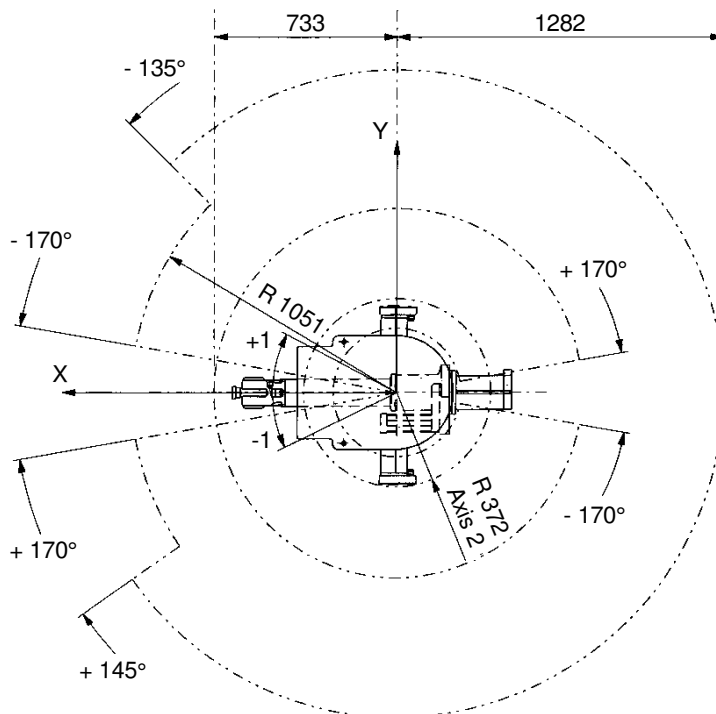
### Type of motion

### Range of movement

Axis 1	Rotation motion	+170°	-	-170°
Axis 2	Arm motion	+20°	-	-100°
Axis 3	Arm motion	+70°	-	-65°
Axis 4	Wrist motion	+150°	-	-150°
Axis 5	Bend motion	+115°	-	-115°
Axis 6	Turn motion	+300°	-	-300°



pos.	x	z
0	570	1045
1	-30	861
2	-586	1127
3	-1104	918
4	-1277	653
5	-1282	770
6	-1051	1221
7	-158	1645
8	734	891
9	633	527
10	254	494



pos.	axis 2	axis 3
0	0	0
1	-100	+70
2	-100	+20
3	-100	-25
4	-100	-50
5	-85	-65
6	-60	-65
7	-10	-65
8	+20	-10
9	+20	+20
10	-30	+70

Figure 10 The extreme positions of the robot arm, inverted version (dimensions in mm). Manipulator seen from the side and above.